

Custom PNA Synthesis: From Simple to Highly Complex Designs

Stop compromising your biology due to synthesis limitations. While others reject complex designs, we deliver the exact molecule your research requires.

Don't Redesign Your Experiment

STANDARD MANUFACTURERS

- ✗ Reject sequences with >5 consecutive Guanines.
- ✗ Limited modification menu.
- ✗ "Trial & Error" approach to design.

★ DESTINA GENOMICS

- ✓ **Challenging Design:** Complex hairpins & G-rich probes.
- ✓ **Advanced Mods:** Gamma-modified and tail modifications.
- ✓ **Expert Support:** 20+ years ensuring correct design first time.

Engineered for Performance



Total Biostability

Pseudopeptide polyamide backbone completely resistant to nucleases and proteases. Ideal for *in vivo* and storage without signal fading.



Single-Base Precision

Significantly more sensitive to mismatches than DNA probes. A single mutation destabilizes the complex entirely, enabling accurate SNPs.



Backbone Engineering

Fine-tune hybridization strength and solubility with gamma-PNAs and tail modifications for "undruggable" targets and ASO applications.

OUR SERVICE WORKFLOW



1. SUBMIT SEQUENCE

Upload your sequence design parameters.



2. EXPERT REVIEW

Chemists check feasibility & solubility needs.



3. SYNTHESIS & QC

Synthesis, HPLC purification & Mass Spec.



4. EXPRESS DELIVERY

Receive PNAs with full compliance reports.

Reliable EU Manufacturing

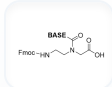
Based in Granada, Spain. We are one of the few specialized PNA producers in Europe shipping worldwide. Enjoy a reliable supply chain with no import delays for EU partners.



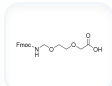


PNA MONOMERS & BASE MODIFICATIONS

STANDARD & SPACER MONOMERS



A, C, G, T
Standard nucleobases



X, Y
TTDS & PEG spacers

MODIFIED FORMATS



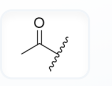
Achiral Abasic
Standard abasic position



Chiral Abasic
 γ -modified chiral pocket (S)

FUNCTIONAL INTEGRATIONS & CONJUGATIONS

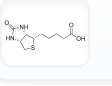
N-TERMINAL MODIFICATIONS & LABELS



HAc
Acetate blocker



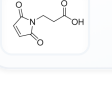
Pho+
Phosphonium (+)



Biotin
High affinity tag



Dye Labels
FAM, ROX, Cy3



Maleimide
Chimera linker



Lipoic Acid
Immobilization

C-TERMINAL



Amide
-NH₂ Tag



Acid
-COOH Tag

CHIMERAS

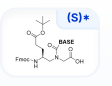


PNA-Peptides
Both Orientations (N→C / C→N)

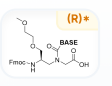


PNA-Oligos
Both Orientations (N→C / C→N)

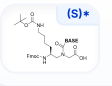
ADVANCED γ & AMINOACID PLATFORM



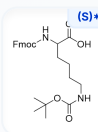
γ -Glutamic
Aglu, Cglu, Gglu, Tglu



γ -PEG
Cpeg, Tpeg



γ -Lysine
Cllys, Tlys



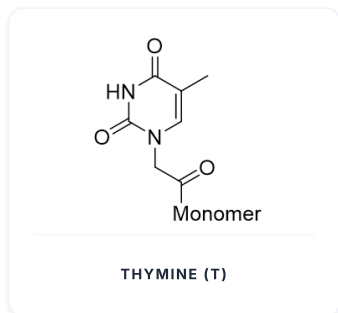
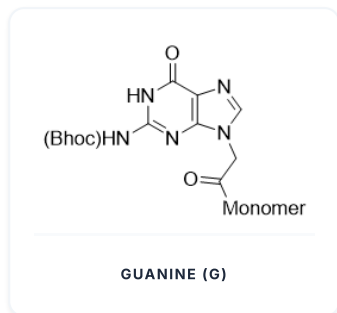
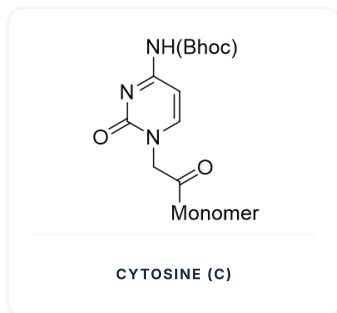
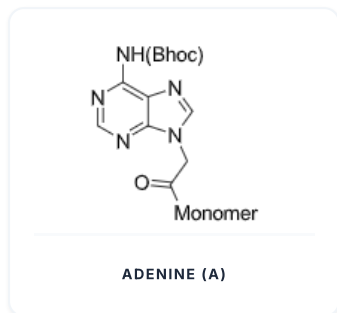
AMINOACID LABELS

Lys: Lysine (S)*	Klys: Biotin
Kazi: Azide	Gly: Alkyne
Cys: Cysteine	Ser: Serine (S)*

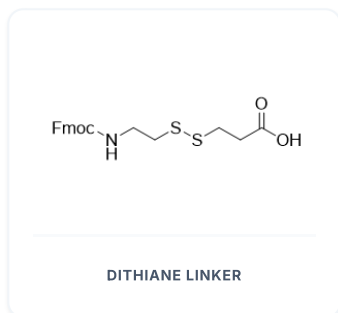
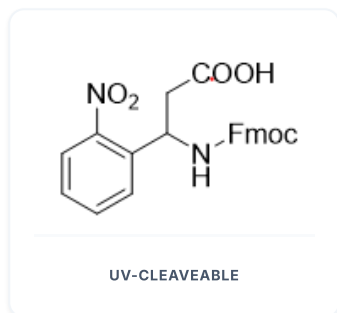
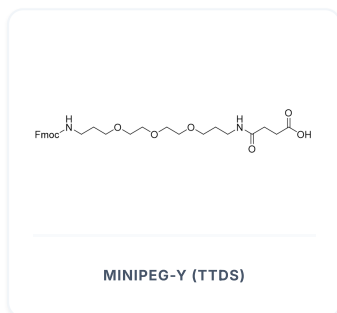
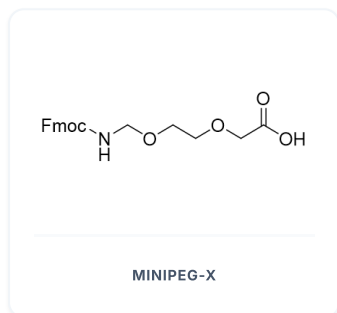
* High purity chiral synthesis: Enantiomeric excess (ee) > 90%



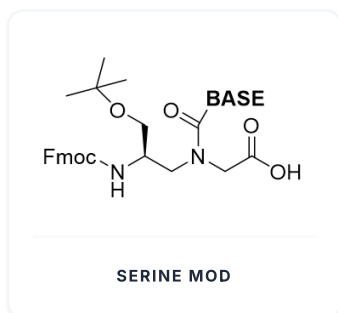
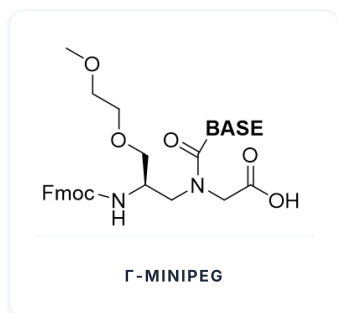
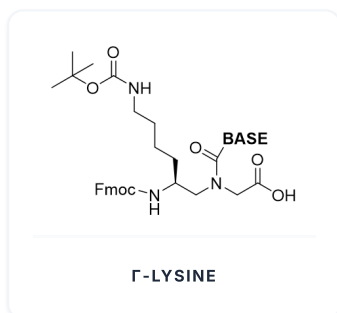
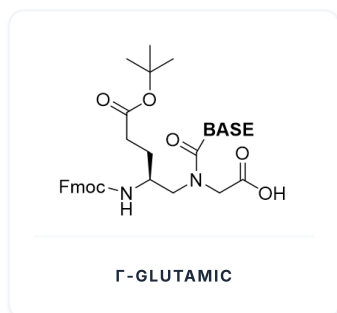
SECTION I: STANDARD PNA NUCLEOBASES



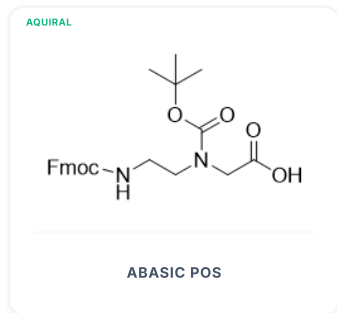
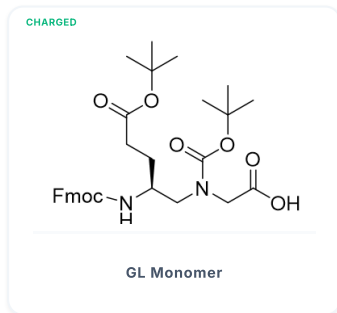
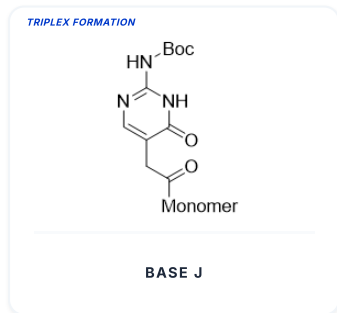
SECTION II: PROFESSIONAL LINKERS & SPACERS



SECTION III: GAMMA-PNA ENGINEERED COMPONENTS

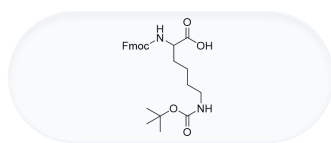


SECTION IV: ABASIC POSITIONS & TRIPLEX BASE

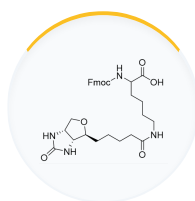




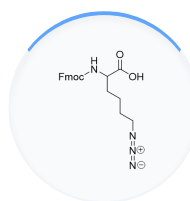
MONOMER ATLAS & SPECIALTY LABELS



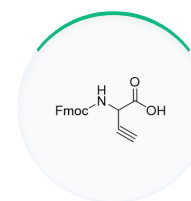
Lysine



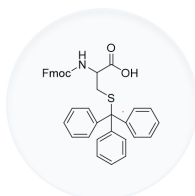
Lys-Biotin



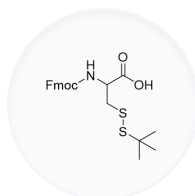
Lys-Azide



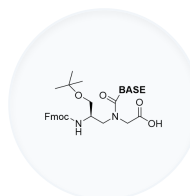
Gly-Alkyne



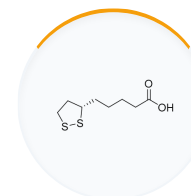
Cys (SH)



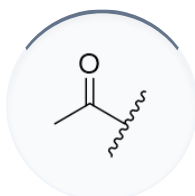
Cys (S-S)



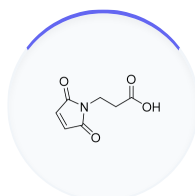
Serine Mod



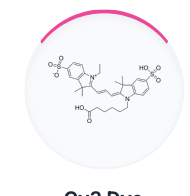
Lipoic Acid



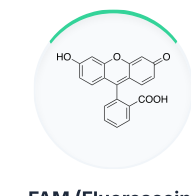
HAc Block



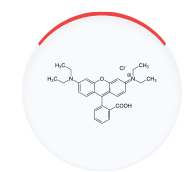
Maleimide Label



Cy3 Dye



FAM (Fluorescein)



ROX Dye



CUSTOM CHEMISTRY

SPECIALTY LABELS

Phosphonium Pho+

Permanent positive charge label. Essential for mitochondrial targeting.

BUILT-TO-ORDER CAPABILITIES:

If your research requires a specific modification, building block, or custom label not listed, please reach out. Our pioneers deliver bespoke PNA solutions for the world's most challenging experiments.

Destina Genomics

PARQUE TECNOLÓGICO CTS (PTS)
AVDA. INNOVATION 1, EDIFICIO BIC
18016 GRANADA, SPAIN

DIRECT INQUIRIES

✉ info@destinagenomics.com
🌐 www.destinagenomics.com